

INSTRCUTION FOR UPGRADING SOFTWARE

CAUTION: DO NOT TURN OFF THE POWER DURING THE UPGRADING

1. Connect this finder with PC through RS-232 cable



2. Turn on the finder
3. Running the program of SatlinkTools



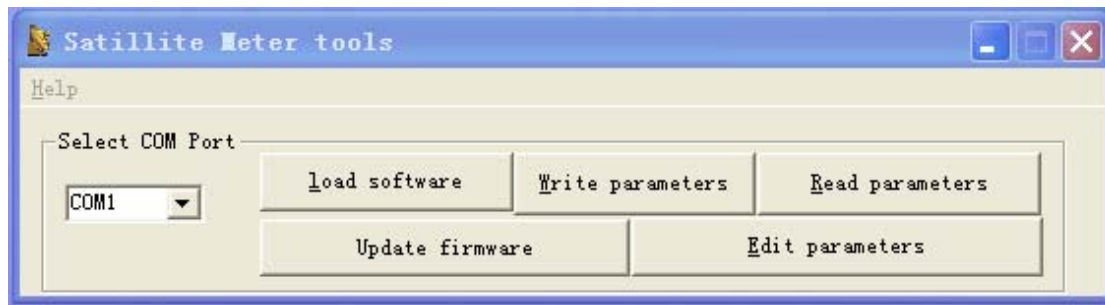
4. When computer shows: succeed connecting com1". Please click "Confirm"



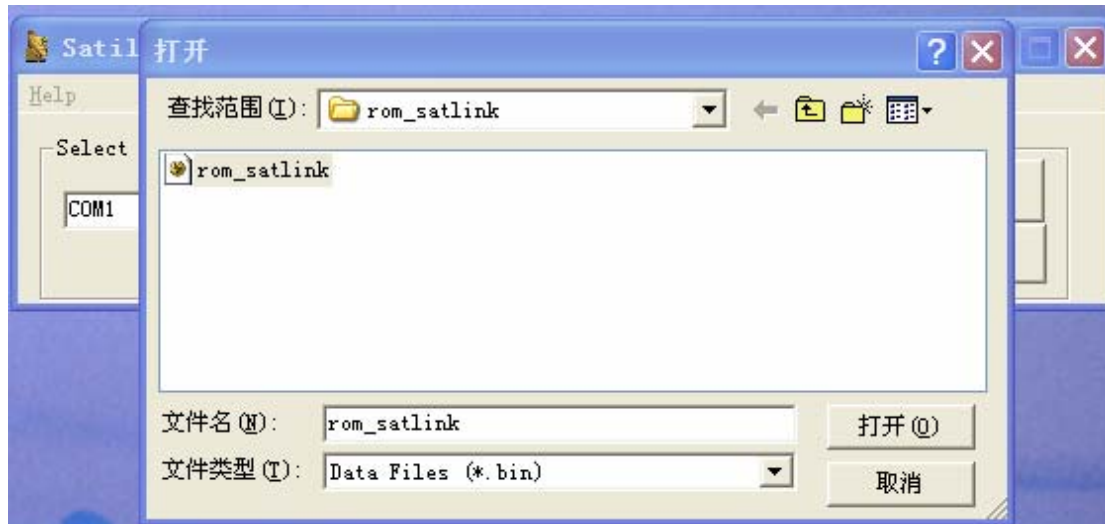
If fail to connect, please check whether this finder already turn on or RS232 cable connecting well with finder or PC



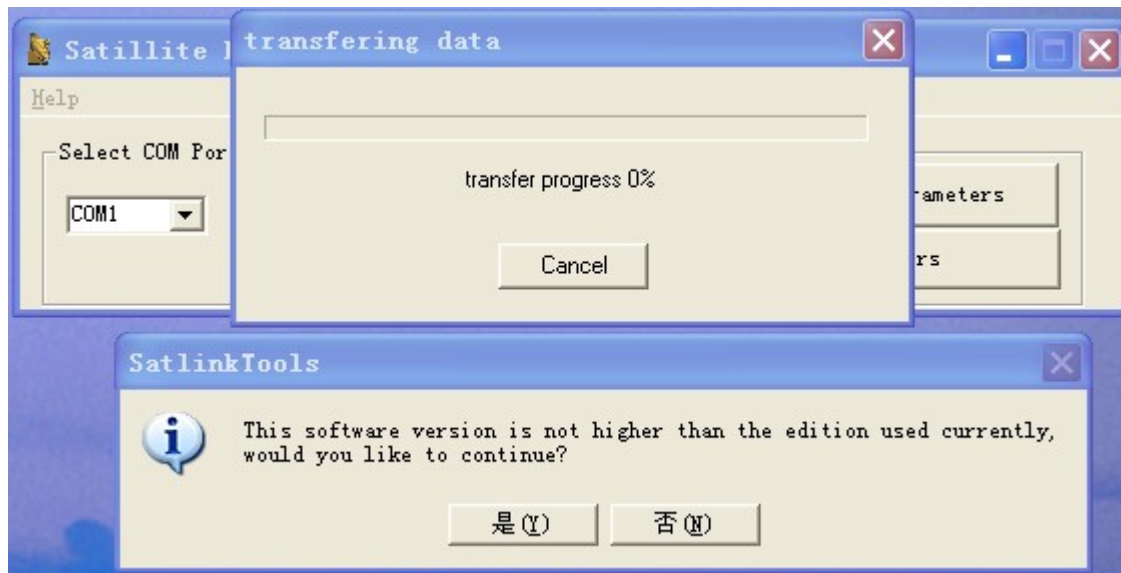
5.1 Upgrading the software

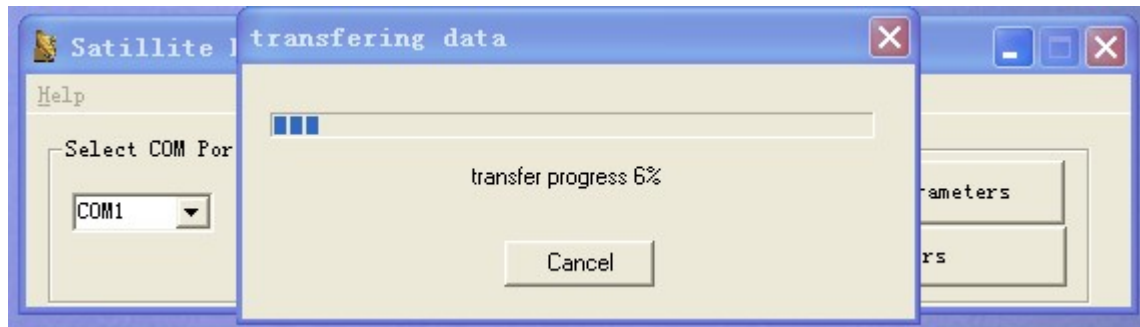


Click the “load software”, then you will see the following window



Click YES to star upgrading software

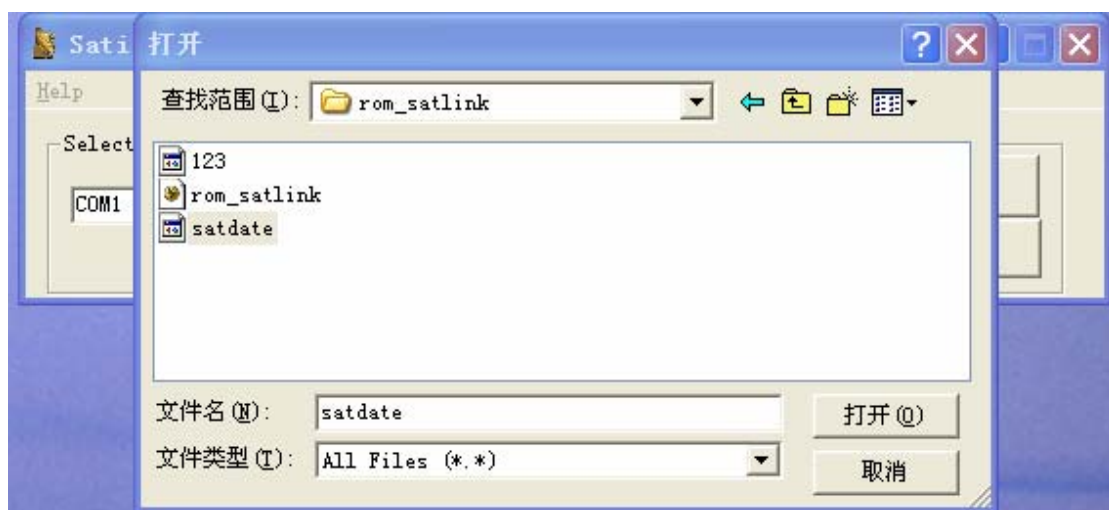




About 2 minutes later, the finder will restart automatically, upgrading software is successful

5.2 Upgrading data

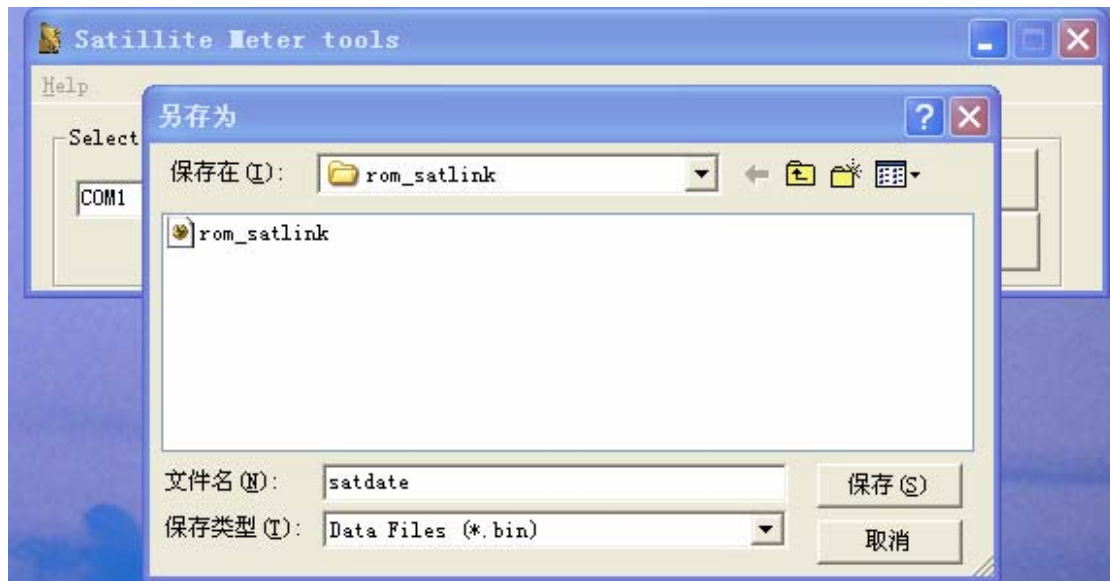
Click "Write parameters" then you will see the following windows:



About 2 minutes later, the finder will restart automatically, sat data upgrading is successful。

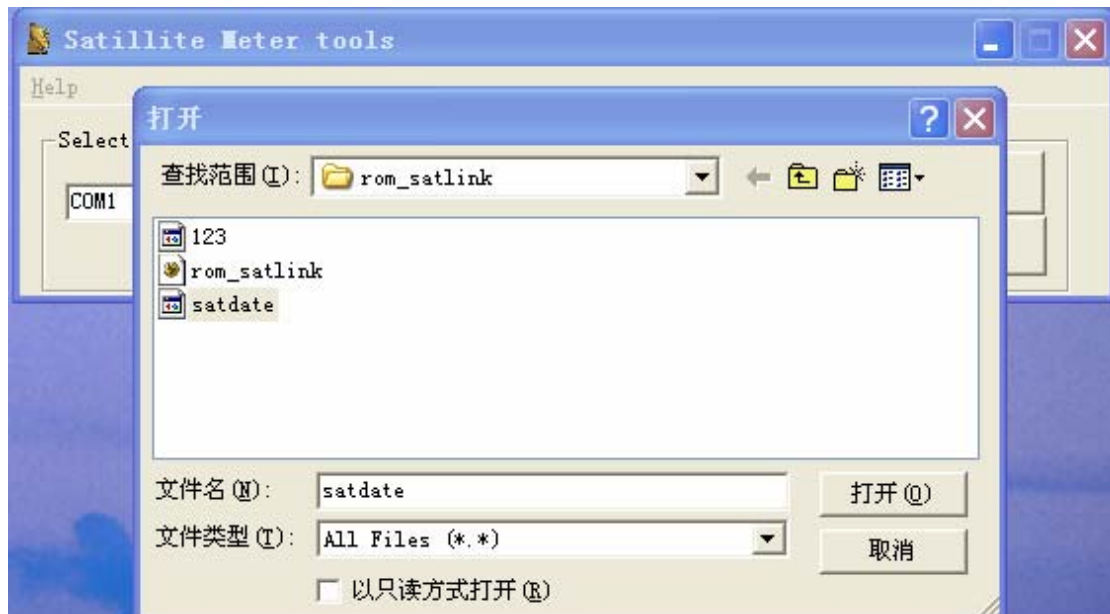
5.3 read the Satellite Meter and save it to the computer

Press "Read parameters" and save it to the computer



5.4 Edit the satellite data

Press “Edit parameters”, open the data file which offer by the factory or your desire data file (the data file is 236KB)



Satellite Meter tools

Help

Select COM Port

COM1

load software Write parameters Read parameters

Update firmware Edit parameters

satellite list

INSAT 3

ABS-1

TELSTAR 10

THAICOM

EXPRESS AM2

INSAT3B, 4A

INTELSAT 709

CHINASTAR 1

YAMAL 201

MEASAT 1, 3

INSAT 4B

NSS 6

ASIASAT2

EXPRESS A2, KAZSA

ASIASAT3S

CAKRAWARTA 1

NSS 11

TELKOM

STARSAT 4

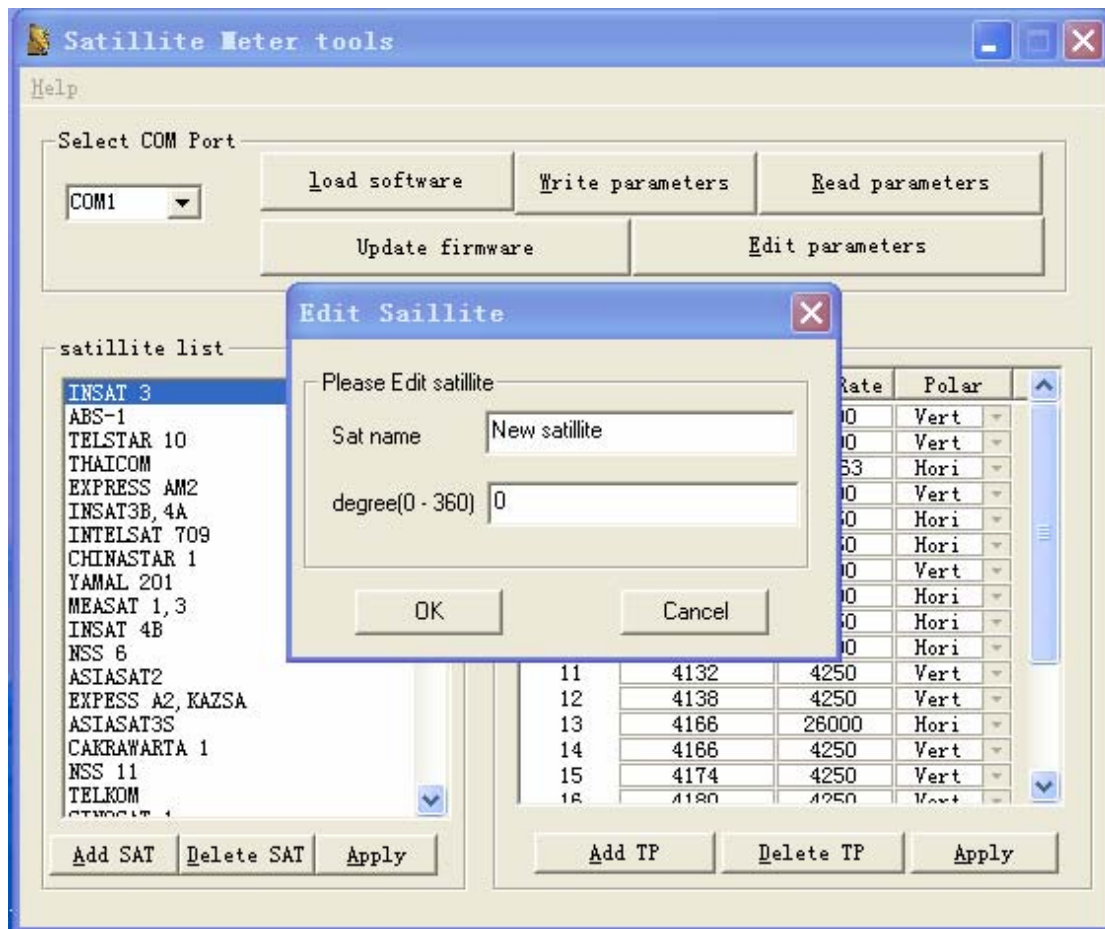
Add SAT Delete SAT Apply

transponder list

Index	Frequency	Sym. Rate	Polar
1	3747	2500	Vert
2	3752	2500	Vert
3	3756	14063	Hori
4	3757	2500	Vert
5	3770	6250	Hori
6	3780	6250	Hori
7	3794	3800	Vert
8	3877	2000	Hori
9	3889	2250	Hori
10	3902	2200	Hori
11	4132	4250	Vert
12	4138	4250	Vert
13	4166	26000	Hori
14	4166	4250	Vert
15	4174	4250	Vert
16	4180	4250	Vert

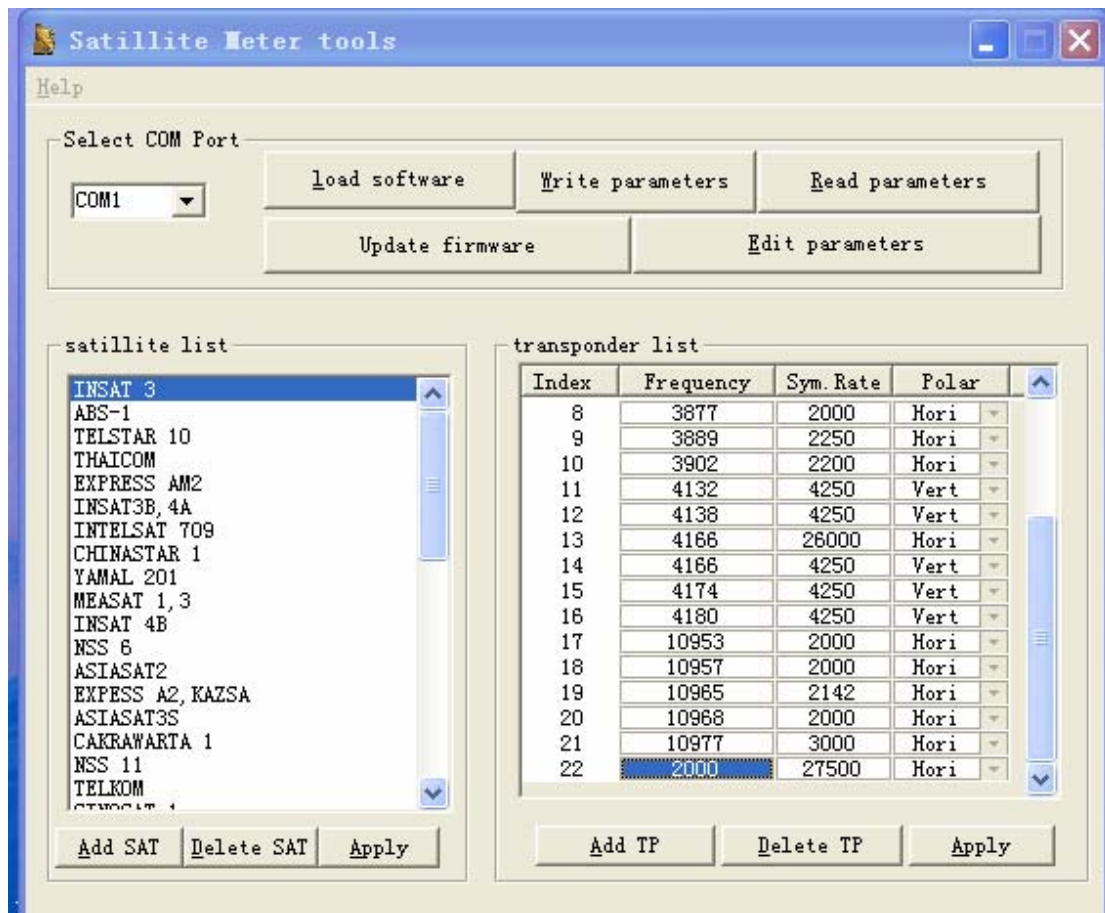
Add TP Delete TP Apply

5.4.1 Add SAT:



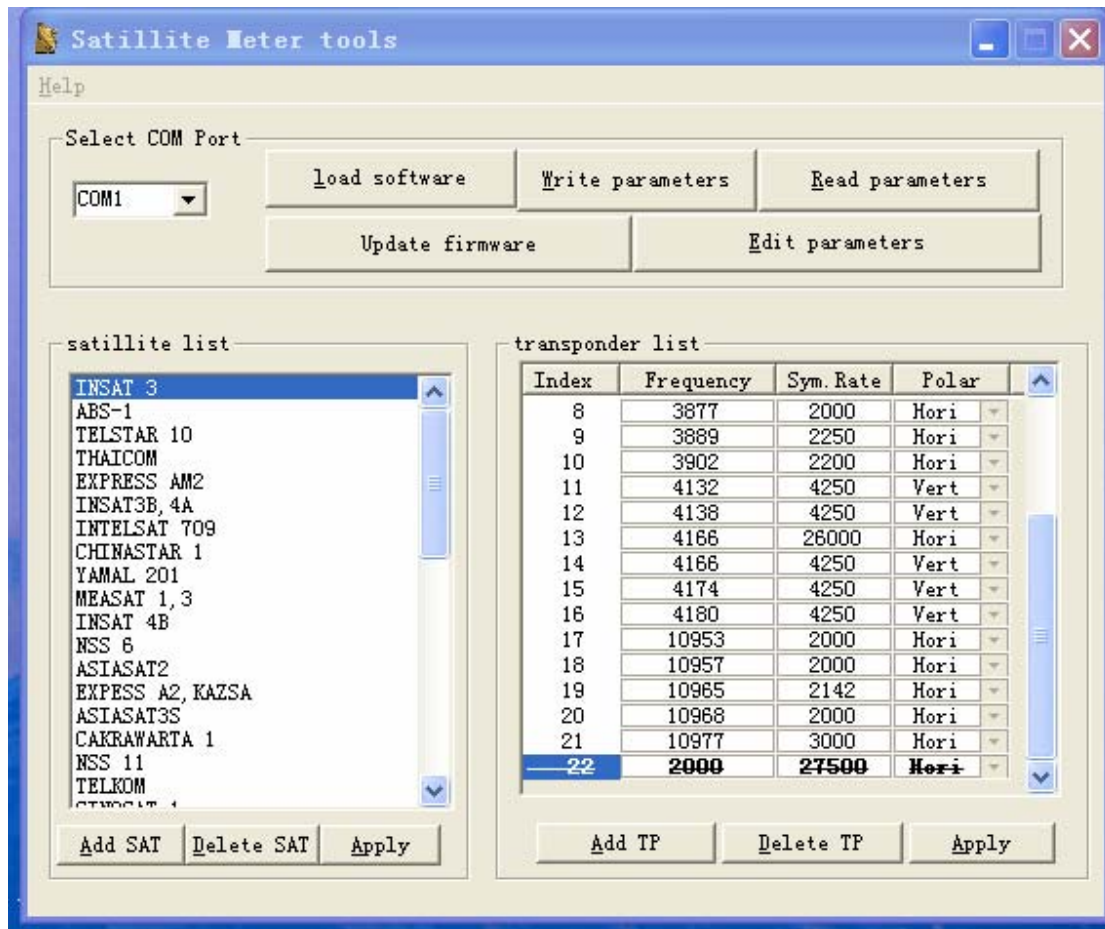
5.4.2 Delete SAT:

5.4.3 Add TP:



Double click the cell, then you can edit the Frequency, Sym. Rate, Polar. Or you can edit the existing TP frequency.

5.4.4 Delete TP:



5.4.5 Apply: